



WESTMINSTER

INTERNATIONAL LTD

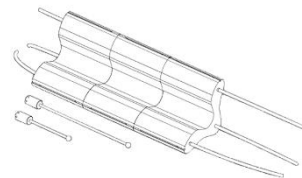
Telephone : +44 (0)1295 756300

Fax : +44 (0)1295 756302

E-Mail : info@wi-ltd.com

Website : www.wi-ltd.com

WG Vehicle Security Barrier



The WG Vehicle Security Barrier is an IWA14 rated vehicle security barrier designed to protect people, buildings and infrastructure from hostile vehicle attack.

It can be rapidly deployed as a temporary or permanent security measure as part of a robust hostile vehicle mitigation strategy.

Its unique shape, with its large footprint, has been specifically designed to block vehicles.

Each 430kg, 1m x 1m x 1m solid rubber unit is connected by steel cables or rods, providing the flexibility to protect both entrance areas and site perimeters against hostile vehicle attack.

The units can also be anchored to create a stronger physical barrier.

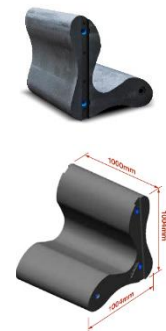
Manufactured from 100% recycled rubber bonded with polyurethane for strength, its tough construction enables the WG Vehicle Security Barrier to be installed almost anywhere, removed and used again and again.

PRODUCT BENEFIT

- A physical and visual security deterrent
- Excellent protection from vehicle borne attacks
- Unique design deforms to increase stopping performance
- Over 65% lighter than concrete solutions
- Modular design allows protection of entrances and perimeters
- Easy to install, remove and relocate
- Suitable for all types of sites

TECHNICAL INFORMATON

- Manufactured from 100% recycled rubber an polyurethane, the WG Vehicle Security Barrier is supplied complete with steel securing cables/ rods and fixings.
- Size: 1000 x 1004 x 1004mm
- Weight: 430kg
- Connectivity: 20mm Ø Steel cables or 1 and 2m rods



PERFORMING RATING

The WG Vehicle Security Barrier has been successfully impact tested to IWA 14-1 specification, stopping a 7.2 tonne N2A lorry travelling at 48kph (30mph).

